

Patricia Eby Proudly Presents  
*3900 Yonge Street, Suite 503*



*York Mills Place speaks of quiet elegance. The beautifully landscaped gardens, reflecting pond, and natural woodlands provide a peaceful setting to relax.*

*This most sought after condominium is situated within easy walking distance to the subway, shops and an assortment of dining experiences.*

*This large gracious suite enjoys an easterly view and inviting tiled patio. There are 3 large bedrooms, 3 bathrooms, updated eat-in kitchen and grand foyer.*

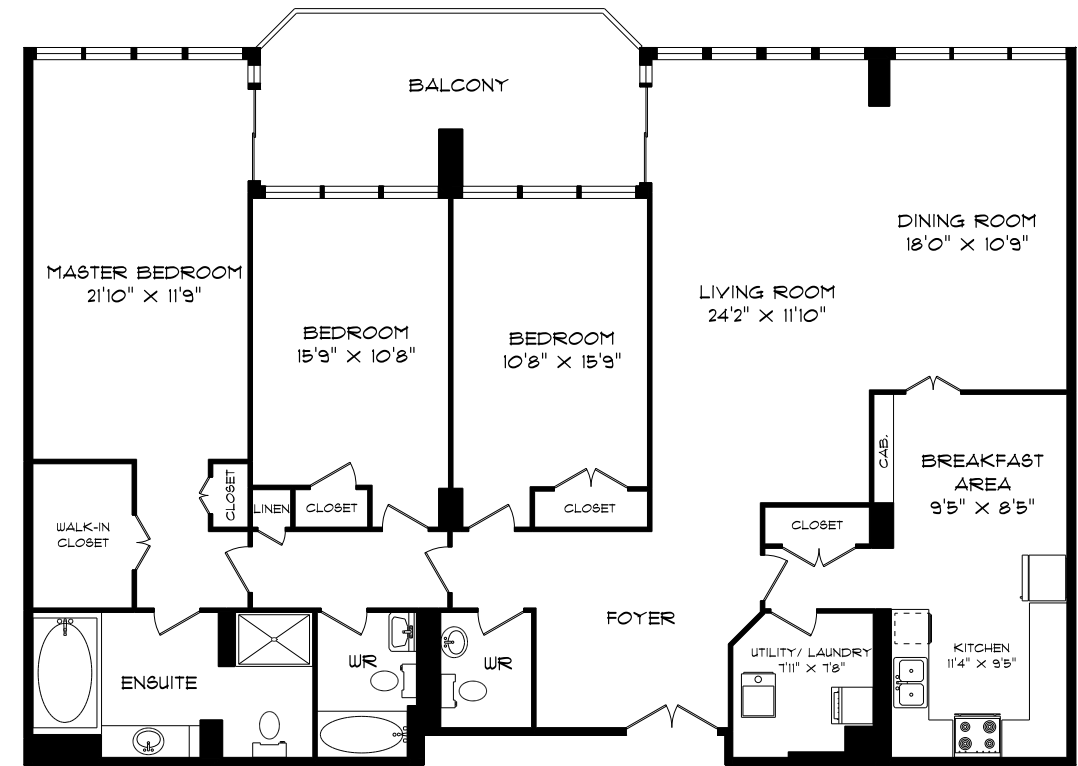




Foyer:		Double entry doors, mirrored ceiling
Living Room:	24'2" x 11'10"	Walkout to large tiled patio
Dining Room:	18' x 10'9"	Parquet flooring
Kitchen:	11'4" x 9'5"	Ceramic floor, updated kitchen, pot lights, new lighting
Breakfast Room:	9'5" x 8'5"	Combined with kitchen
Utility room:	7'11" x 7'8"	Stackable washer & dryer, upright freezer, furnace
Bathroom:	2 piece	Marble , new sink and faucets, new toilet
Master Bedroom:	21'10" x 11'9"	Walkout to large tiled patio, walk-in closet, 2nd closet
Ensuite:	4 piece	New lighting, new sinks and faucets, new toilet
Second Bedroom:	15'9" x 10'8"	Closet
Third Bedroom:	15'9" x 10'8"	Closet
Main Bathroom:		Marble, new lighting, new sink and faucet and new toilet

**ADDITIONAL INFORMATION**

Heat:	Carrier heat pump with air cleaner -owned
Cooling:	Central air conditioning
2 Parking Spaces:	#530, and B44 (exclusive use)
Locker:	Exclusive use. # 26
Realty Taxes:	\$5,775.84 2014
Maintenance Fees :	\$1,929.00 monthly. Included in maintenance fees: hydro, heat, water, central air conditioning, basic cable TV, parking and security system
Amenities:	Inviting lounge which overlooks serene Muskoka-like patio and reflecting pond. Pool, sauna, gym and 24 hour concierge
Inclusions:	All electric light fixtures, chandelier in dining room and foyer, all curtains, blinds, rod and tracks, Kenmore Elite fridge, Bosch electric stove, Kenmore built-in dishwasher, Maytag microwave oven, Whirlpool washer and dryer, Kelvinator standing freezer, electronic air cleaner
Exclusions:	Standing light fixture in foyer
Possession:	Flexible
Offered At:	\$1,149,000



**SUITE 503 FLOOR  
2050 SQUARE FEET**



Presented by:  
**Patricia Eby** Sales Representative  
 Chestnut Park Real Estate Limited, Brokerage  
 1300 Yonge Street, Suite 100,  
 Toronto Ontario, M4T 1X3 • 416.925.9191



THE INFORMATION CONTAINED IN THE FACT SHEET HAS BEEN SUPPLIED TO CHESTNUT PARK REAL ESTATE LIMITED BY THE OWNER OF THE PROPERTY. CHESTNUT PARK HAS RELIED ON THE OWNER'S REPRESENTATIONS FOR THE PURPOSES OF PREPARING THE FACT SHEET.